

FOR SALE

Tremaine Avenue

M2 General Industrial Zone

20 acre lot

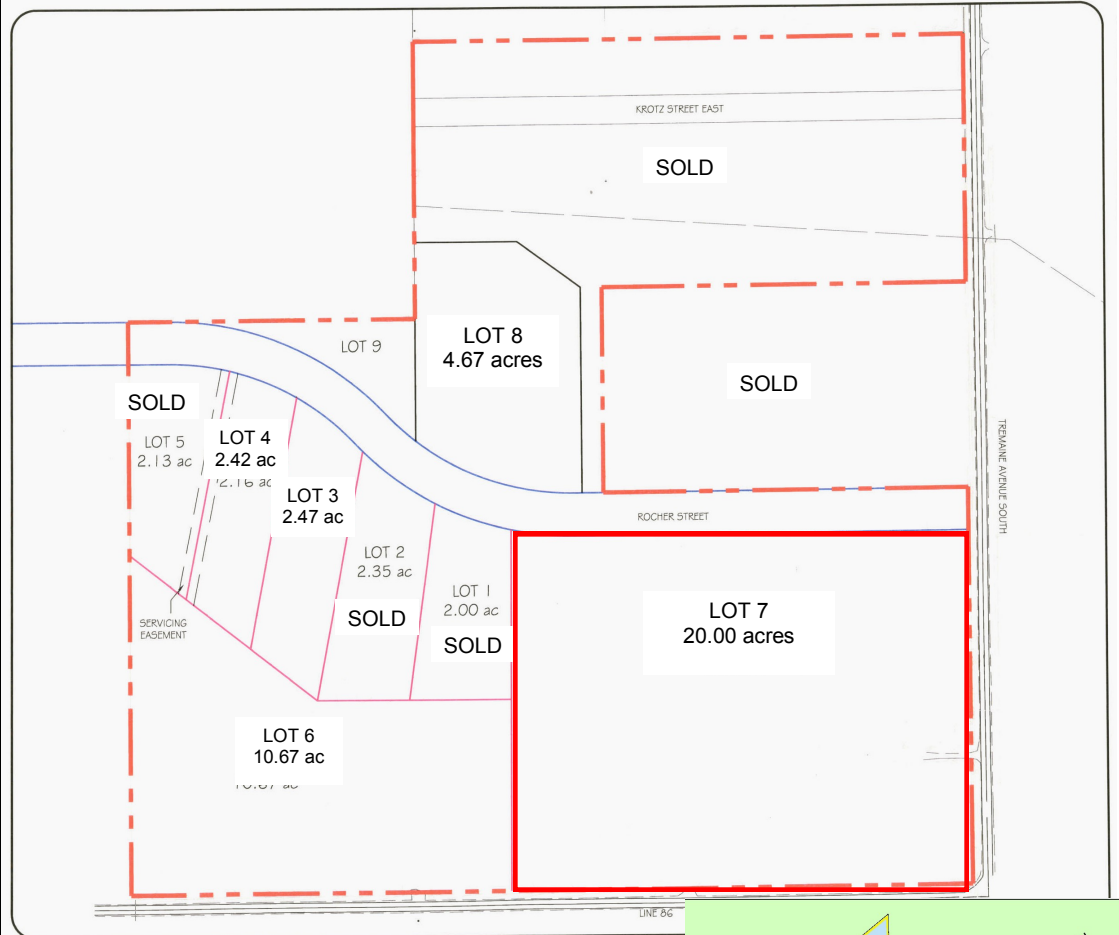
\$ 42,000/acre

This 20 acre industrial lot is strategically located in North Perth's Industrial Park. It is ideally suited for light industrial uses involving manufacturing, assembly, processing, storing, or warehousing.

Listowel has a population of 6,500 and is conveniently located at the intersection of Highways 23 and 86.

This property is owned by the Municipality of North Perth.

For more information, contact:
Bernia Wheaton
Economic Development Officer
T.519-656-9253
C.519-274-4651
bwheaton@perthcounty.ca
www.perthcounty.ca



PROPERTY DESCRIPTION

- Lot Area: 20 acres
- Dimensions: 1,000 ft x 900 ft
- Features: Municipal water & Sanitary Sewer
44KV Hydro electric service
Natural Gas
Fibre Optic
Storm Water Management Pond
- Legal Desc: Lot 7, Registered Plan No. 44M-31

Zoning: General Industrial Zone
Permitted Uses: The following is a summarized list of permitted uses. For a complete list, please contact the Economic Development Department.

an animal clinic; a cold storage plant; a communications facility; a concrete plant or an asphalt plant; a contractor's shop and/or yard; a dairy; an equipment sales and rental establishment; a farm implement sales and service establishment; a feed mill; a flour mill; a fuel storage and/or supply establishment; a grain elevator; a laboratory or research facility; a lumber yard and building supply outlet; a machine shop; a parking area; a planing mill or saw mill; a public works yard, garage, warehouse, or storage yard; a service shop; a steel supply establishment; a transportation terminal; a welding shop; a wholesale establishment; a warehousing establishment.

